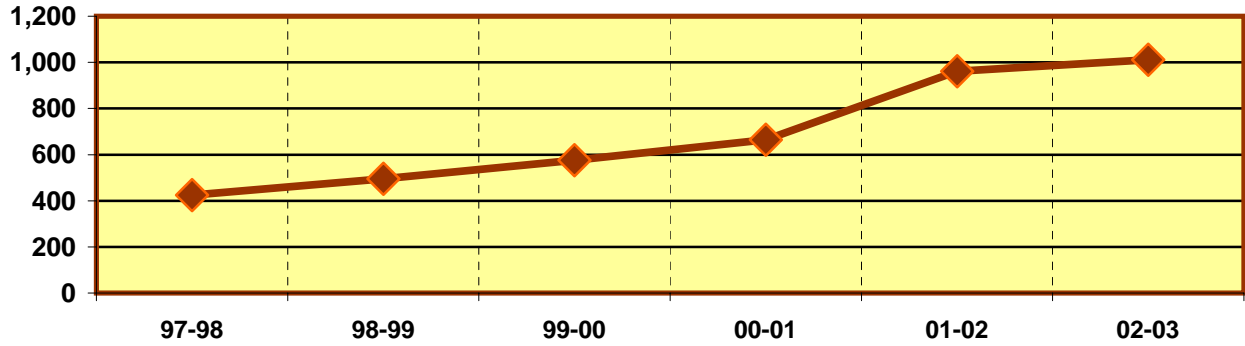


**EASTFIELD COLLEGE  
PROGRAM/DISCIPLINE REVIEW DATA SHEET  
TECHNICAL PROGRAM LEVEL - ACADEMIC YEAR 2002 - 2003**

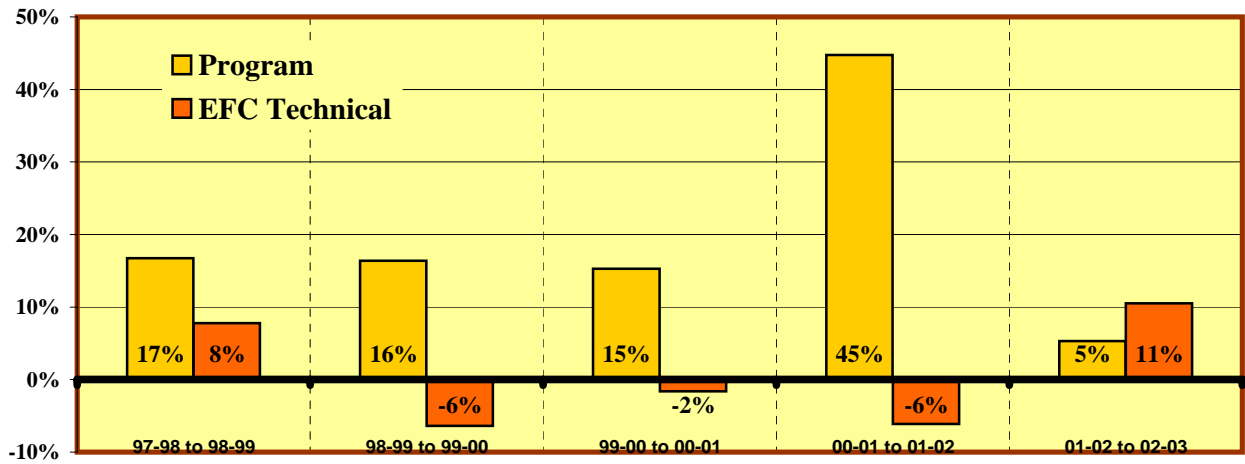
**AUTO TECHNOLOGY (AUMT,DEMUR)**

**PROGRAM ENROLLMENT**



	Enrollments					
	97-98	98-99	99-00	00-01	01-02	02-03
<b>Program</b>	424	495	576	664	961	1,012
<b>All Tech-Occ Programs</b>	11,345	12,228	11,442	11,255	10,571	11,678

**% Change in Enrollment**



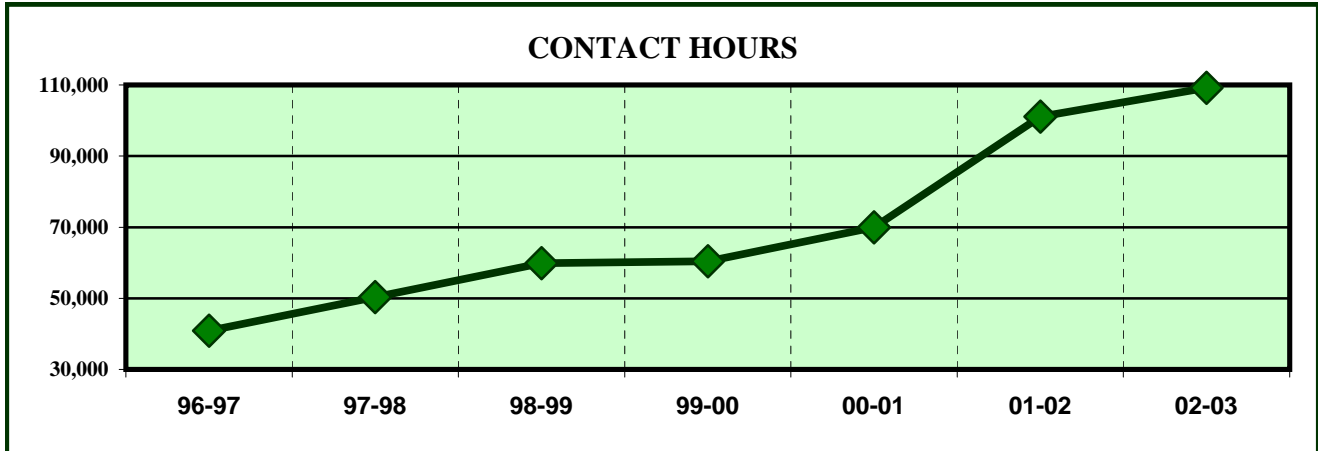
	% Change				
	97-98 to 98-99	98-99 to 99-00	99-00 to 00-01	00-01 to 01-02	01-02 to 02-03
<b>Program</b>	16.7%	16.4%	15.3%	44.7%	5.3%
<b>All Tech-Occ Programs</b>	7.8%	-6.4%	-1.6%	-6.1%	10.5%

**ENROLLMENT INDICATORS**

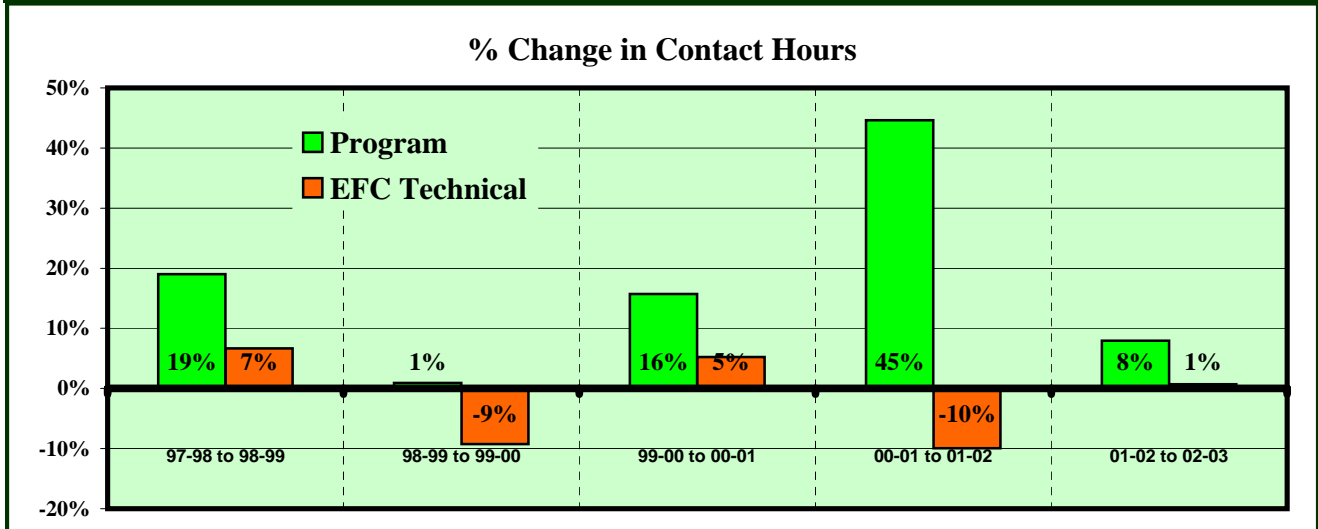
	% Change Comparisons			Program Decreases?			Down more than all Tech-Oc?		
	5 year	3 year	1 year	In	YES/NO	Score	For	YES/NO	Score
<b>Program</b>	27.7%	25.2%	5.3%	5 of 5 yrs	NO	5	5 yr avg.	NO	5
<b>All Tech-Oc</b>	0.6%	0.7%	10.5%	4 of 5 yrs	NO	5	3 yr avg.	NO	5
				Last 3 of 5 yrs	NO	5	1 yr avg.	YES	3
<b>*OR UP LESS THAN</b>							<b>OF POSSIBLE 30 POINT TOTAL</b>		
							<b>28</b>	<b>93.3%</b>	

**EASTFIELD COLLEGE**  
**PROGRAM/DISCIPLINE REVIEW TECHNICAL PROGRAM LEVEL**  
**ACADEMIC YEAR 2002 - 2003**

**AUTO TECHNOLOGY (AUMT,DEMUR)**



	CONTACT HOURS						
	96-97	97-98	98-99	99-00	00-01	01-02	02-03
<b>Program</b>	40,912	50,304	59,872	60,416	69,920	101,120	109,168
<b>All Tech-Occ Programs</b>	991,664	980,976	1,046,208	949,316	998,828	899,536	905,696

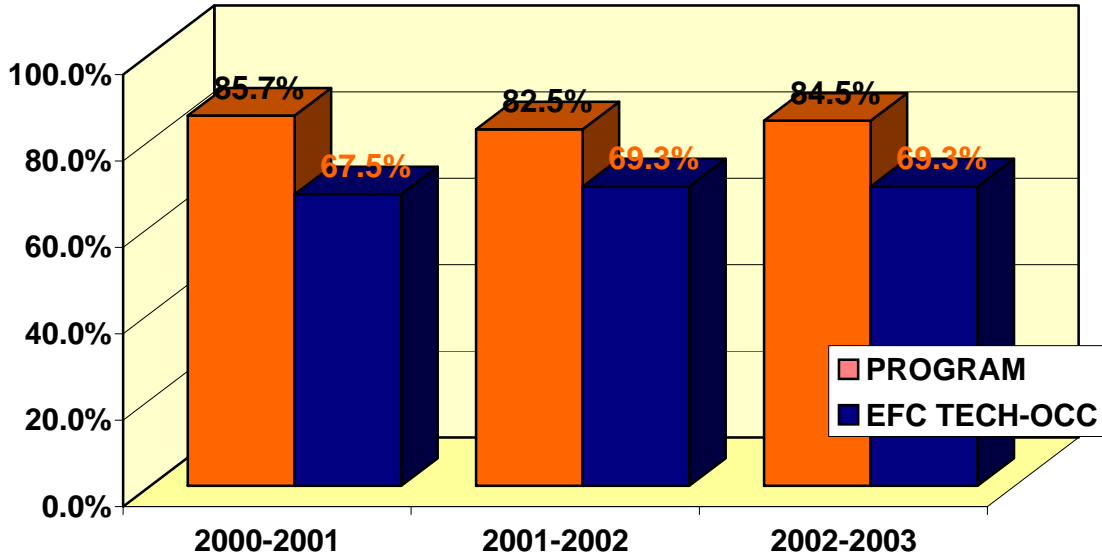


	% Change						
	96-97 to 97-98	97-98 to 98-99	98-99 to 99-00	99-00 to 00-01	00-01 to 01-02	01-02 to 02-03	
<b>Program</b>	23.0%	19.0%	0.9%	15.7%	44.6%	8.0%	
<b>All Tech-Occ Programs</b>	-1.1%	6.6%	-9.3%	5.2%	-9.9%	0.7%	

**CONTACT HOUR INDICATORS**

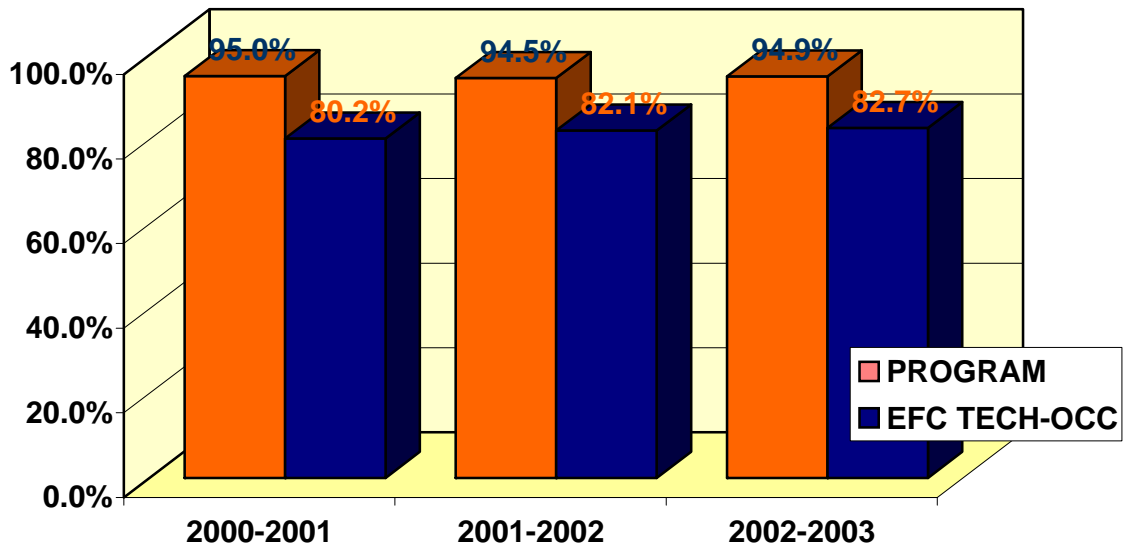
	% Change Comparisons			Program Decreases?			Down more than Tech-Occ?		
	5 year	3 year	1 year	In	YES/NO	Score	For	YES/NO	Score
<b>Program</b>	33.4%	26.9%	8.0%	5 of 5 yrs	NO	5	5 yr avg.	NO	5
<b>All Tech-OC</b>	-1.7%	-1.5%	0.7%	4 of 5 yrs	NO	5	3 yr avg.	NO	5
				Last 3 of 5 yrs	NO	5	1 yr avg.	NO	5
<b>*OR UP LESS THAN</b>								<b>OF POSSIBLE 30 POINT TOTAL</b>	
								<b>30</b>	<b>100.0%</b>

**CLASSROOM SUCCESS  
 AUTO TECHNOLOGY (AUMT,DEMR)**



**% OF STUDENTS RECEIVING A, B OR C IN PROGRAM COURSES**

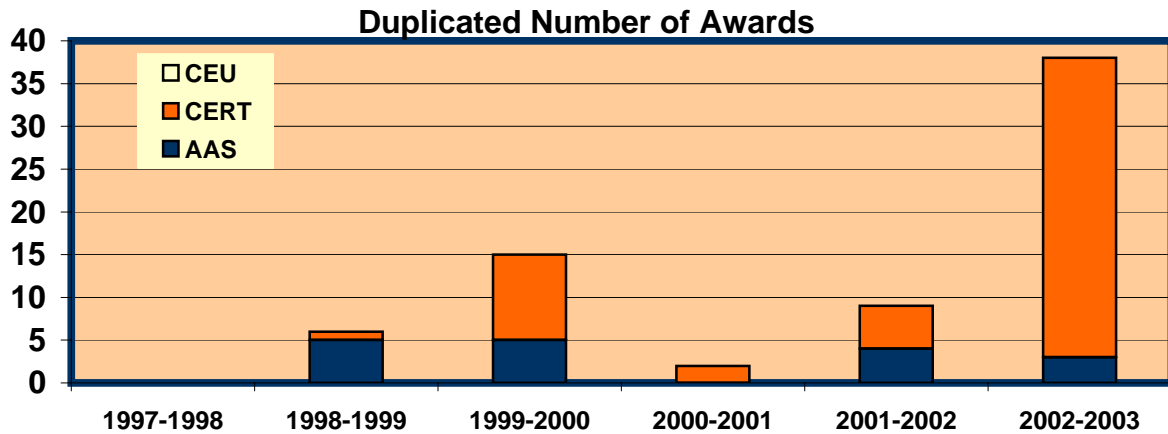
	2000-2001	2001-2002	2002-2003
PROGRAM	85.7%	82.5%	84.5%
EFC-TECH	67.5%	69.3%	69.3%



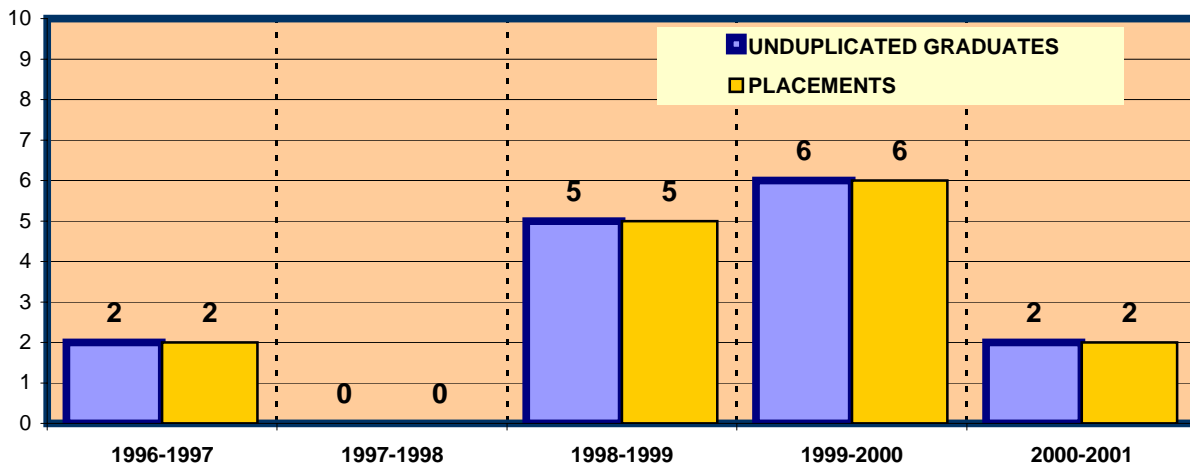
**% COURSE COMPLETION FOR PROGRAM**

	2000-2001	2001-2002	2002-2003
PROGRAM	95.0%	94.5%	94.9%
EFC-TECH	80.2%	82.1%	82.7%

## STUDENT OUTCOMES SUCCESS AUTO TECHNOLOGY (AUMT, DEMR)



	1997-1998	1998-1999	1999-2000	2000-2001	2001-2002	2002-2003
<b>AAS</b>	0	5	5	0	4	3
<b>CERT</b>	0	1	10	2	5	35
<b>CEU</b>	0	0	0	0	0	0
<b>PROGRAM TOTAL</b>	0	6	15	2	9	38



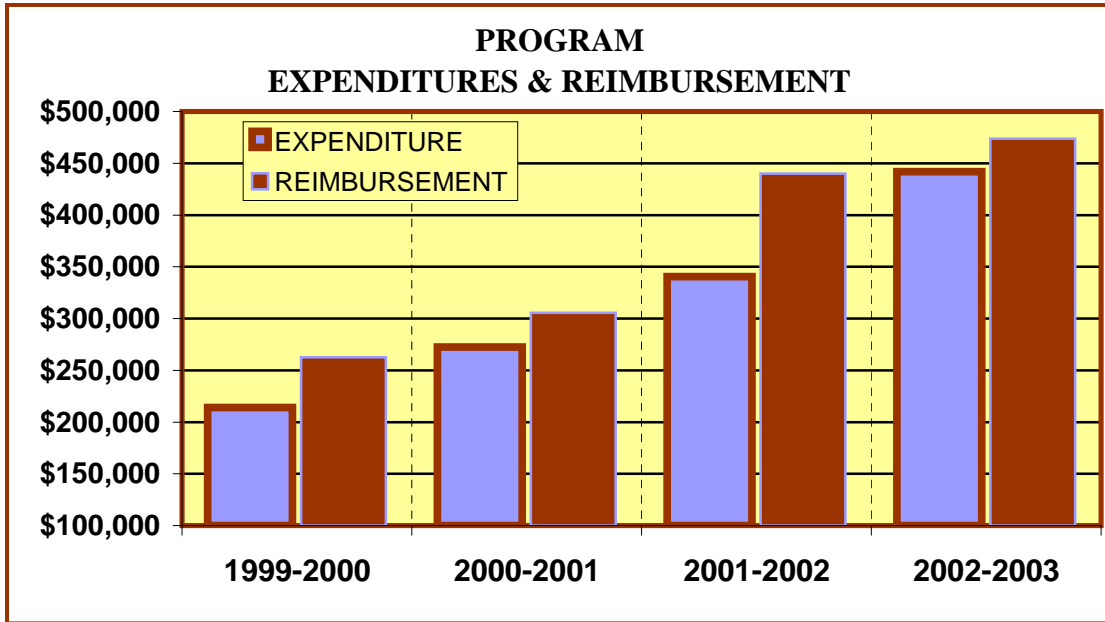
### PROGRAM PLACEMENTS

	1996-1997	1997-1998	1998-1999	1999-2000	2000-2001	2001-2002
<b>Unduplicated Grads</b>	2	0	5	6	2	
<b>Placements</b>	2	0	5	6	2	
<b>Program Percentage</b>	100.0%	N/A	100.0%	100.0%	100.0%	

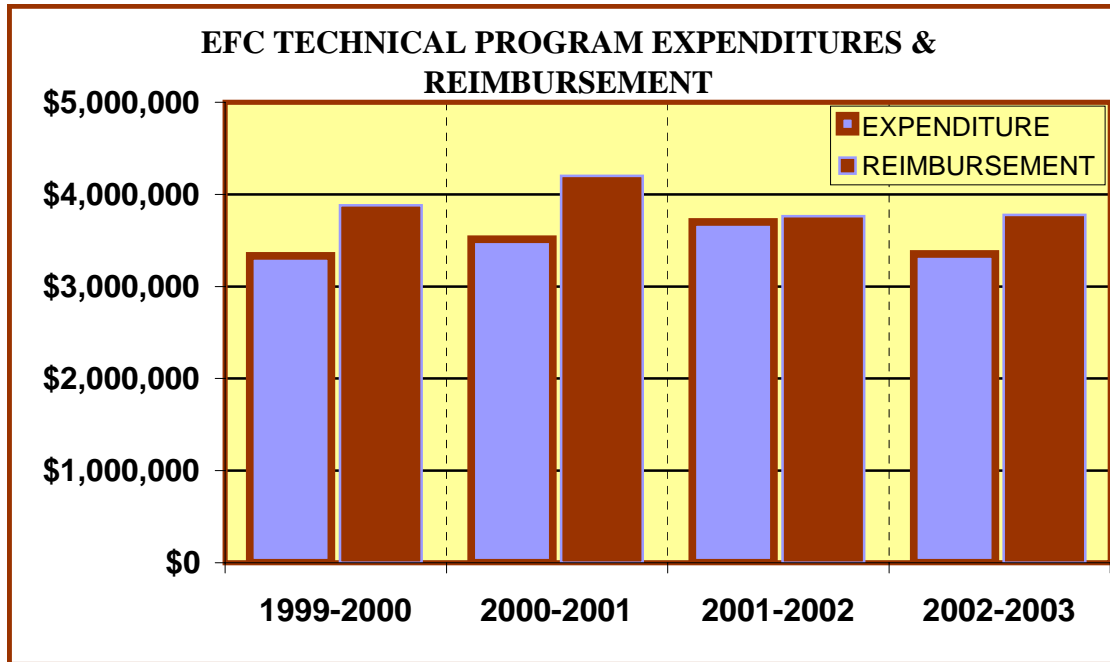
### SUCCESS INDICATORS

Completion Rate Over %75			Percent of A, B, & C Grades More than 50%			TECH SCORE OUT OF POSSIBLE 12 POINT SCORE	
In	YES/NO	Score	In	YES/NO	Score	#	%
2002-2003	YES	3	2002-2003	YES	3	12	100%
PLACEMENT Over %75			Technical Program Awards 15 Or More Over 3 Years				
In	YES/NO	Score	In	YES/NO	Score		
2000-2001	YES	3	2002-2003	YES	3		

**EASTFIELD COLLEGE  
TECHNICAL PROGRAM REVIEW  
ACADEMIC YEAR 2002 - 2003**

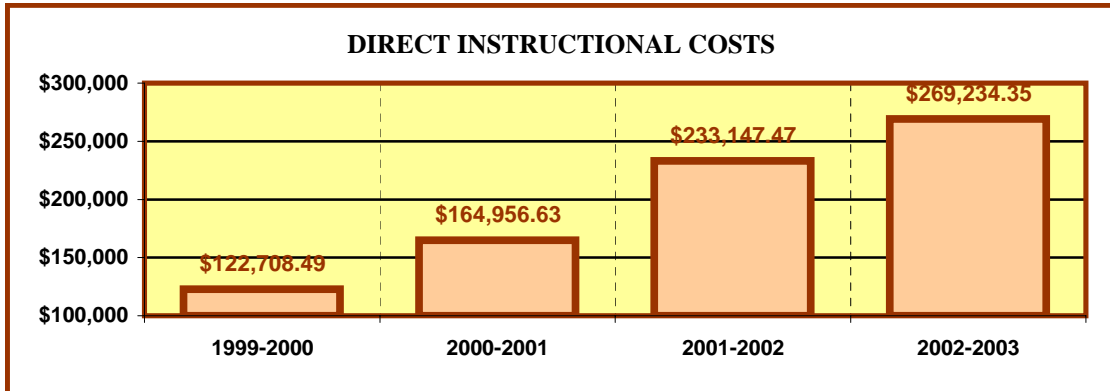


<b>AUTO TECHNOLOGY (AUMT, DEMR)</b>				
	1999-2000	2000-2001	2001-2002	2002-2003
<b>EXPENDITURES</b>	\$ 214,014.45	\$ 272,610.09	\$ 340,536.42	\$ 442,034.52
<b>REIMBURSEMENT</b>	\$ 262,676.48	\$ 305,495.36	\$ 439,988.80	\$ 473,576.96

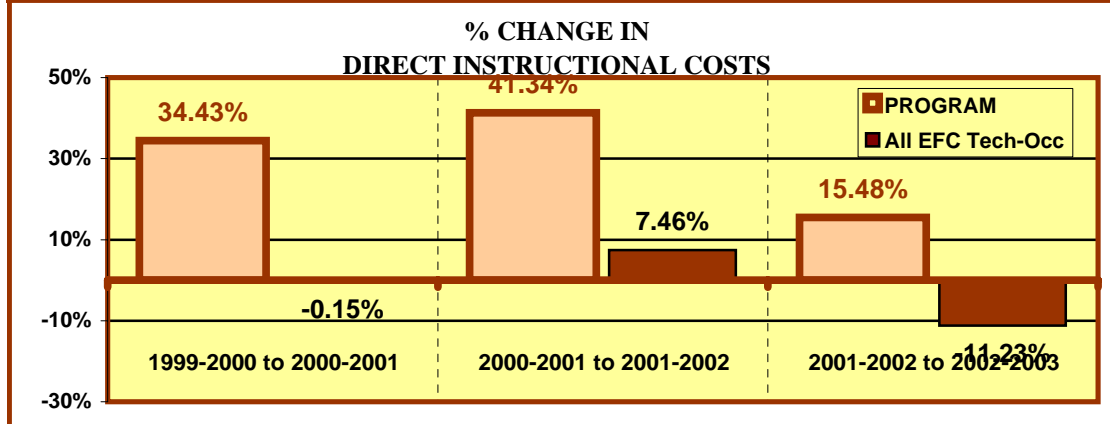


<b>All EFC Tech-Occ</b>				
	1999-2000	2000-2001	2001-2002	2002-2003
<b>EXPENDITURES</b>	\$ 3,332,156.16	\$ 3,512,521.98	\$ 3,698,810.13	\$ 3,351,908.70
<b>REIMBURSEMENT</b>	\$ 3,879,822.76	\$ 4,199,497.60	\$ 3,762,235.68	\$ 3,778,124.48

**EASTFIELD COLLEGE  
TECHNICAL PROGRAM REVIEW  
ACADEMIC YEAR 2002 - 2003**



	DIRECT INSTRUCTIONAL COSTS			
	1999-2000	2000-2001	2001-2002	2002-2003
Program	\$ 122,708.49	\$ 164,956.63	\$ 233,147.47	\$ 269,234.35
All EFC Tech-Occ	\$ 2,603,429.71	\$ 2,599,648.71	\$ 2,793,602.31	\$ 2,479,846.05



	% CHANGE IN DIRECT INSTRUCT. COSTS		
	1999-2000 to 2000-2001	2000-2001 to 2001-2002	2001-2002 to 2002-2003
PROGRAM	34.43%	41.34%	15.48%
All EFC Tech-Occ	-0.15%	7.46%	-11.23%

**FINANCIAL INDICATORS**

FALL, 2002 PROGRAM/DISCIPLINE (CostCenter) Reimbursement to Cost Center Expenses is positive in					
2002-2003		BOTH 2002-2003 & 2001-2002		3 OF LAST 4 YEARS	
YES/NO	Score	YES/NO	Score	YES/NO	Score
YES	3	YES	3	YES	3
DIRECT INSTRUCTIONAL COSTS DECREASED BETWEEN:					
2001-2002 & 2002-2003		1999-2000 & 2002-2003		BOTH 01-02 & 02-03 AND 00-01 & 01-02	
YES/NO	Score	YES/NO	Score	YES/NO	Score
NO	0	NO	0	NO	0
INSTRUCTIONAL COSTS DECREASED MORE THAN EFC TECH 01-02 TO 02-03			SCORE OF A POSSIBLE 21 POINT TOTAL		
YES/NO	Score	SCORE		%	
NO	0	9		42.9%	
OVERALL REVIEW TOTAL OF POSSIBLE 93 POINTS					
			SCORE	%	
			79	84.9%	