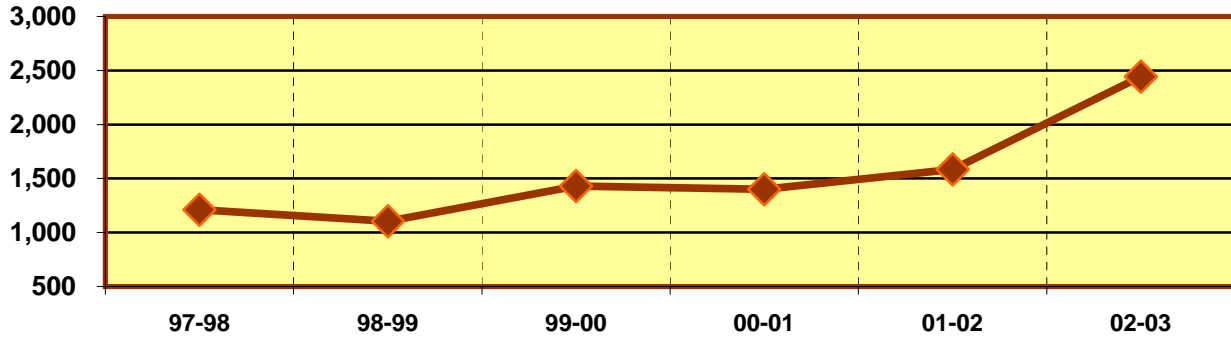


**EASTFIELD COLLEGE
PROGRAM/DISCIPLINE REVIEW DATA SHEET
ACADEMIC YEAR 2002 - 2003**

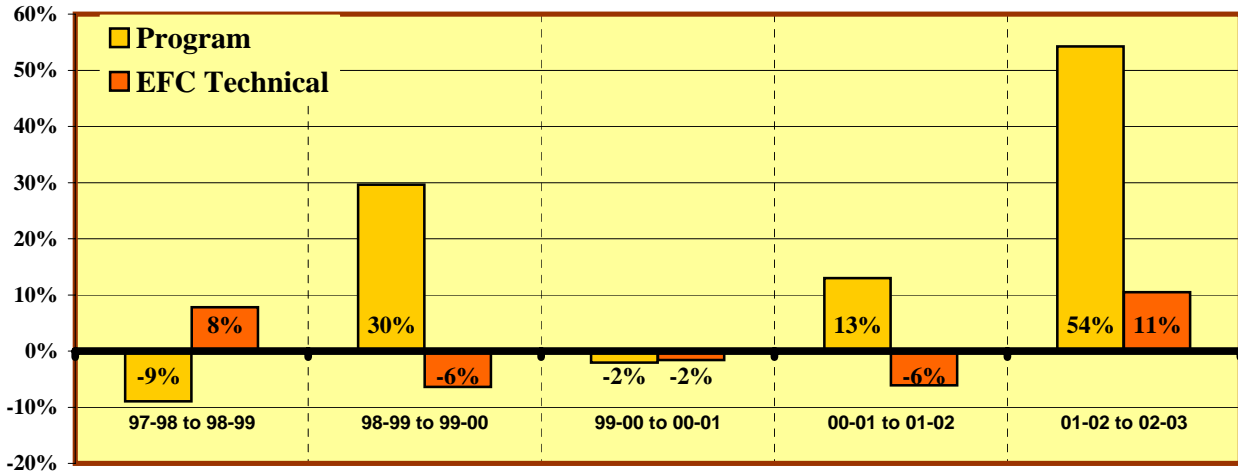
CHILD DEVELOPMENT (CDEC/TECA)

PROGRAM ENROLLMENT



	Enrollments					
	97-98	98-99	99-00	00-01	01-02	02-03
Program	1,211	1,103	1,430	1,401	1,583	2,442
All Tech-Occ Programs	11,345	12,228	11,442	11,255	10,571	11,678

% Change in Enrollment



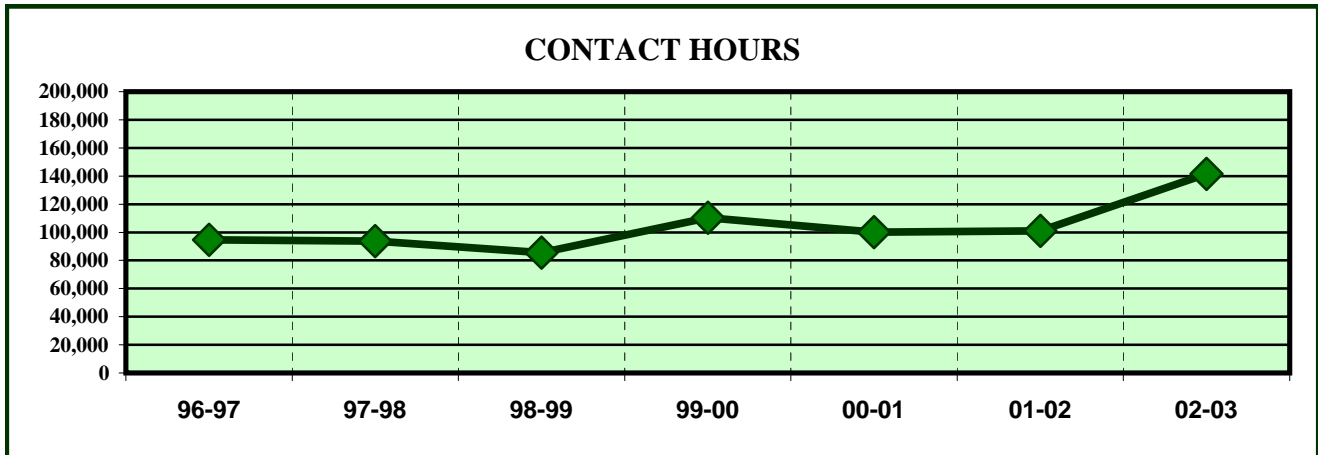
	% Change				
	97-98 to 98-99	98-99 to 99-00	99-00 to 00-01	00-01 to 01-02	01-02 to 02-03
Program	-8.9%	29.6%	-2.0%	13.0%	54.3%
All Tech-Occ Programs	7.8%	-6.4%	-1.6%	-6.1%	10.5%

ENROLLMENT INDICATORS

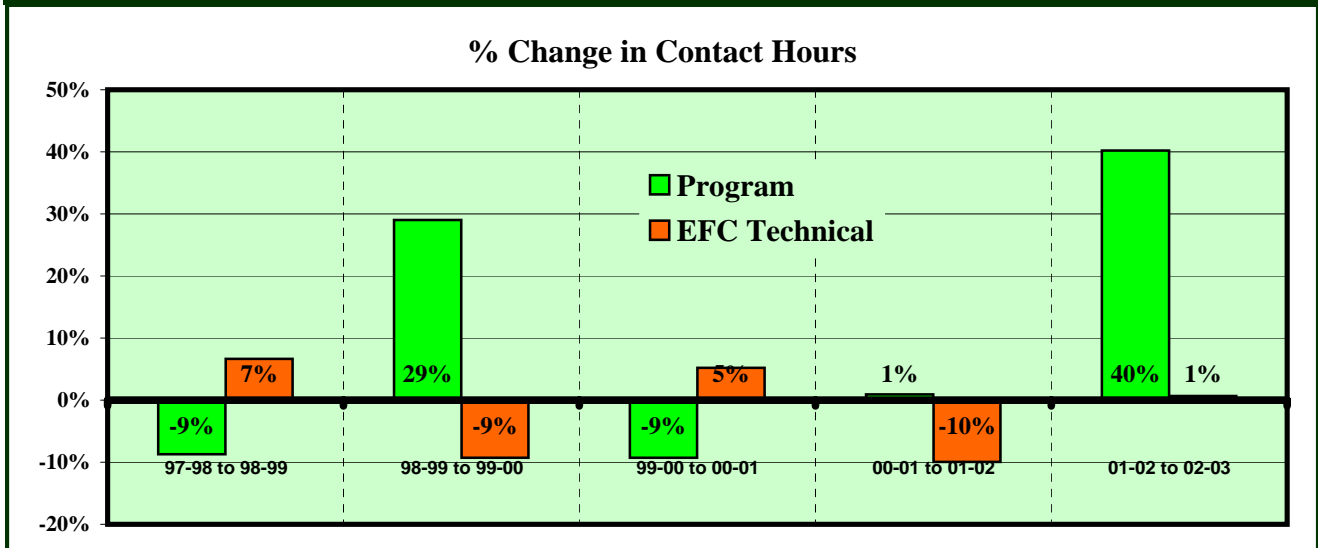
	% Change Comparisons			Program Decreases?			Down more than all Tech-Oc?		
	5 year	3 year	1 year	In	YES/NO	Score	For	YES/NO	Score
Program	20.3%	23.6%	54.3%	5 of 5 yrs	NO	5	5 yr avg.	NO	5
All Tech-OC	0.6%	0.7%	10.5%	4 of 5 yrs	NO	5	3 yr avg.	NO	5
				Last 3 of 5 yrs	NO	5	1 yr avg.	NO	5
OF POSSIBLE 30 POINT TOTAL								30	100.0%

**EASTFIELD COLLEGE
PROGRAM/DISCIPLINE REVIEW
ACADEMIC YEAR 2002 - 2003**

CHILD DEVELOPMENT (CDEC/TECA)



	CONTACT HOURS						
	96-97	97-98	98-99	99-00	00-01	01-02	02-03
Program	94,688	93,648	85,472	110,272	100,016	100,960	141,568
All Tech-Occ Programs	991,664	980,976	1,046,208	949,316	998,828	899,536	905,696

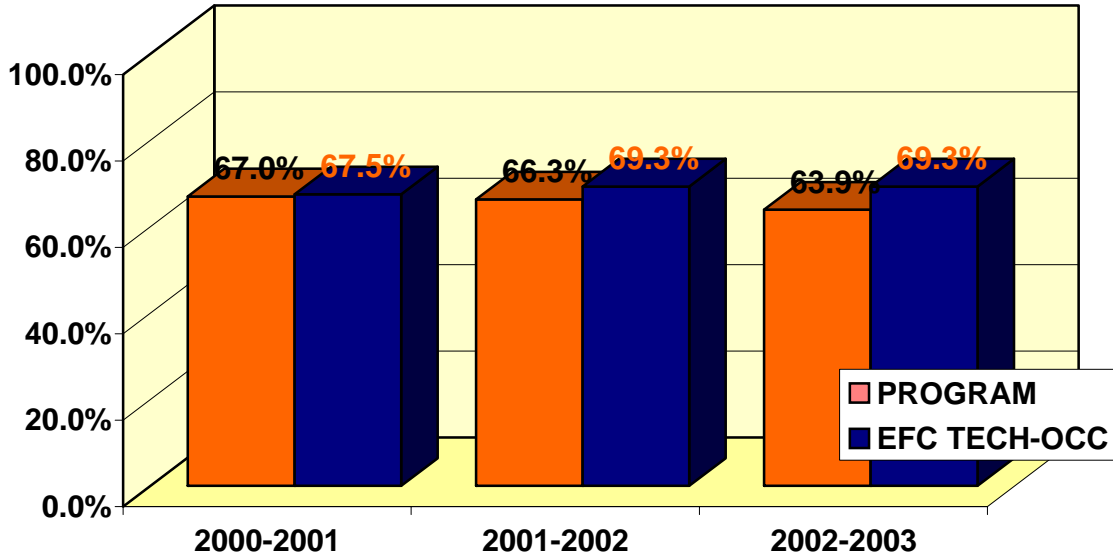


	% Change					
	96-97 to 97-98	97-98 to 98-99	98-99 to 99-00	99-00 to 00-01	00-01 to 01-02	01-02 to 02-03
Program	-1.1%	-8.7%	29.0%	-9.3%	0.9%	40.2%
All Tech-Occ Programs	-1.1%	6.6%	-9.3%	5.2%	-9.9%	0.7%

CONTACT HOUR INDICATORS

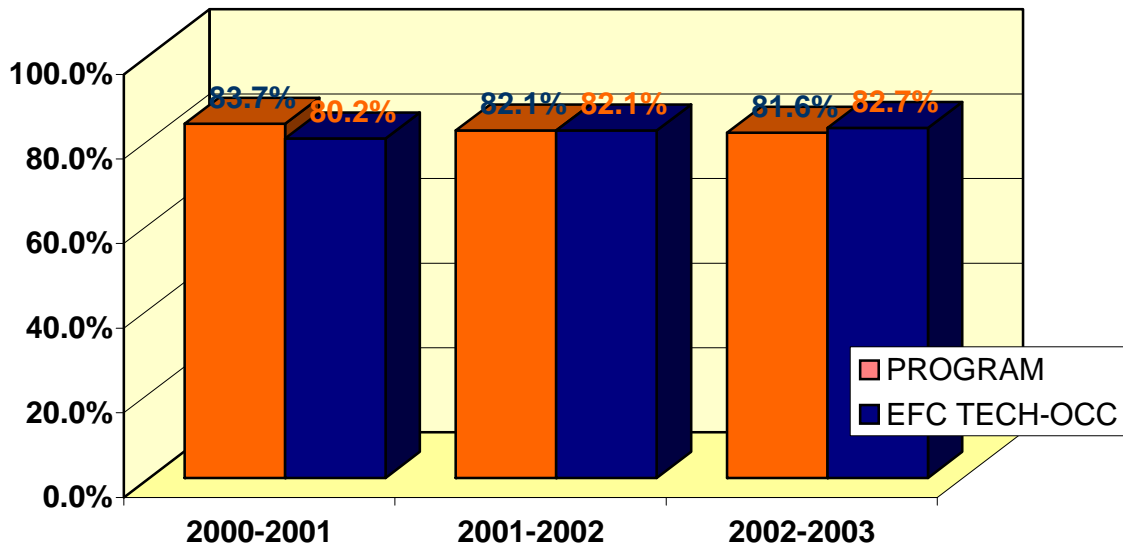
	% Change Comparisons			Program Decreases?			Down more than Tech-Occ?		
	5 year	3 year	1 year	In	YES/NO	Score	For	YES/NO	Score
Program	9.9%	9.5%	40.2%	5 of 5 yrs	NO	5	5 yr avg.	NO	5
All Tech-OC	-1.7%	-1.5%	0.7%	4 of 5 yrs	NO	5	3 yr avg.	NO	5
				Last 3 of 5 yrs	NO	5	1 yr avg.	NO	5
OF POSSIBLE 30 POINT TOTAL								30	100.0%

**CLASSROOM SUCCESS
CHILD DEVELOPMENT (CDEC/TECA)**



% OF STUDENTS RECEIVING A, B OR C IN PROGRAM COURSES

	2000-2001	2001-2002	2002-2003
PROGRAM	67.0%	66.3%	63.9%
EFC-TECH	67.5%	69.3%	69.3%

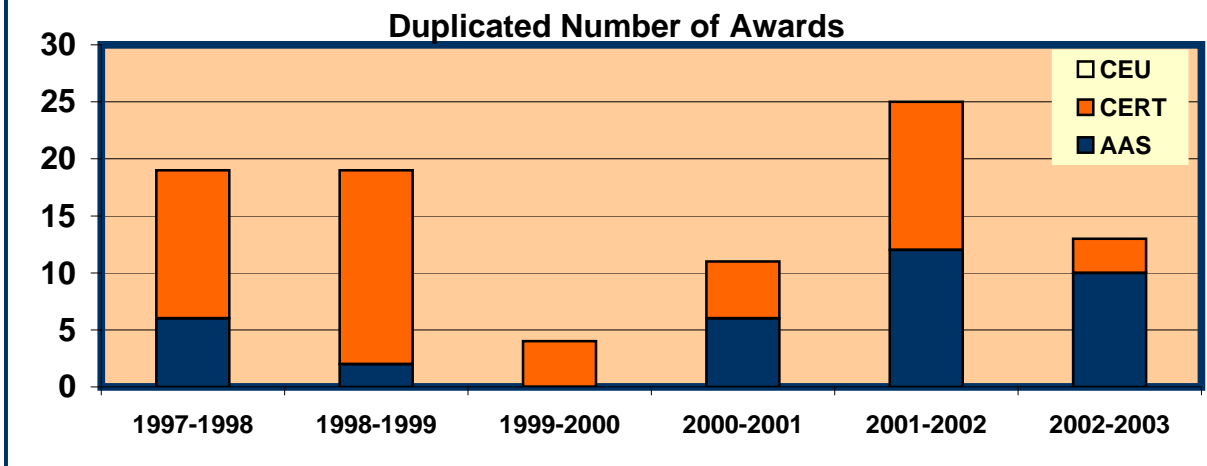


% COURSE COMPLETION FOR PROGRAM

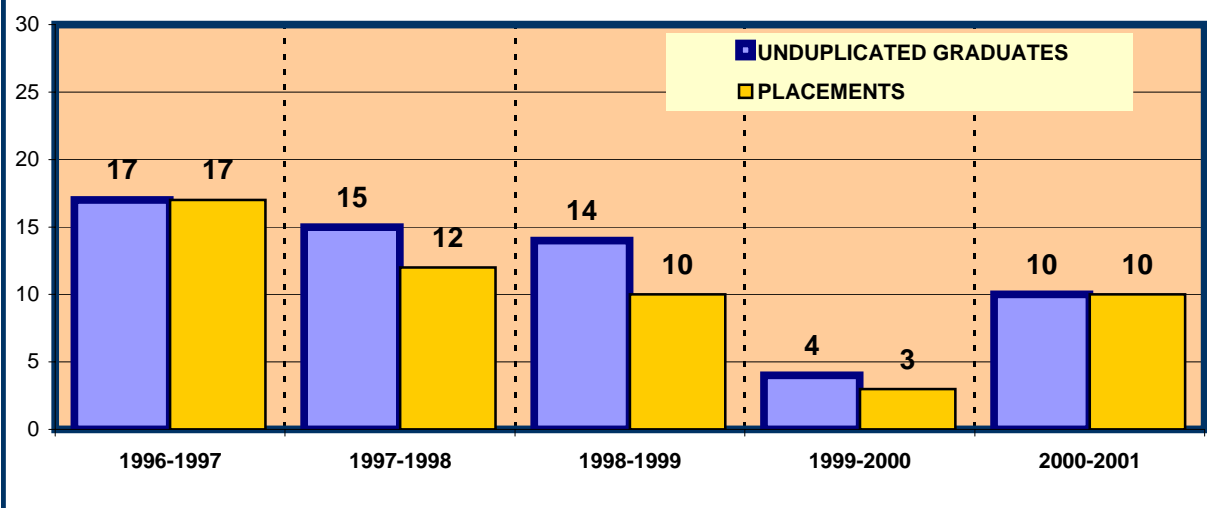
	2000-2001	2001-2002	2002-2003
PROGRAM	83.7%	82.1%	81.6%
EFC-TECH	80.2%	82.1%	82.7%

EASTFIELD COLLEGE
PROGRAM/DICIPLINE REVIEW
ACADEMIC YEAR 2002-2003

STUDENT OUTCOMES SUCCESS
CHILD DEVELOPMENT (CDEC/TECA)



	1997-1998	1998-1999	1999-2000	2000-2001	2001-2002	2002-2003
AAS	6	2	0	6	12	10
CERT	13	17	4	5	13	3
CEU	0	0	0	0	0	0
PROGRAM TOTAL	19	19	4	11	25	13



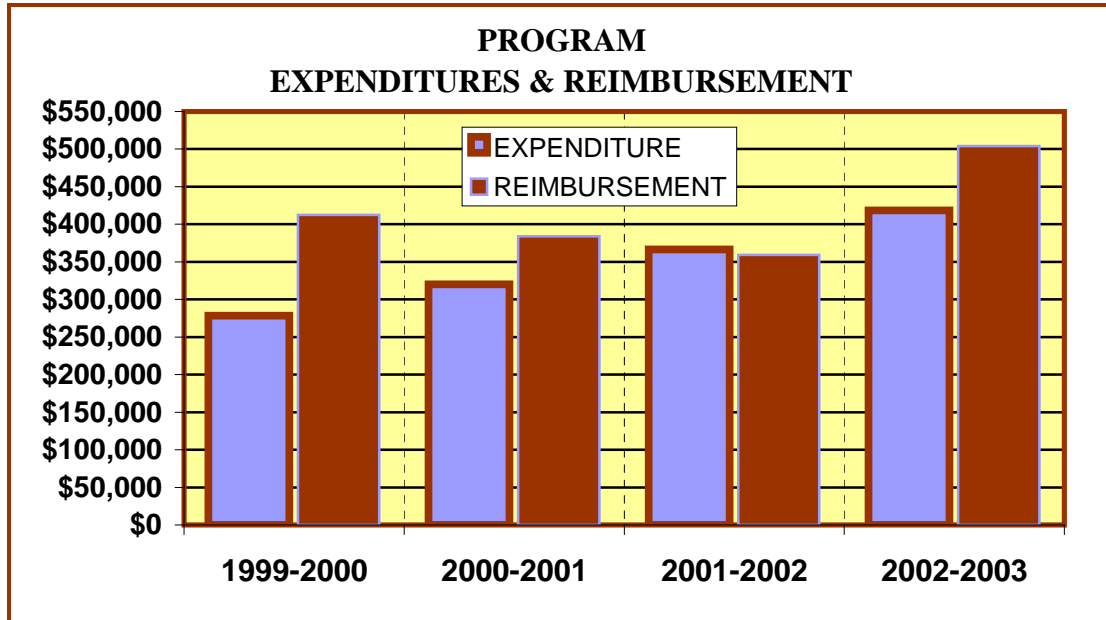
% OF PROGRAM PLACEMENTS

	1996-1997	1997-1998	1998-1999	1999-2000	2000-2001	2001-2002
Unduplicated Grads	17	15	14	4	10	
Placements	17	12	10	3	10	
Program Percentage	100.0%	80.0%	71.4%	75.0%	100.0%	

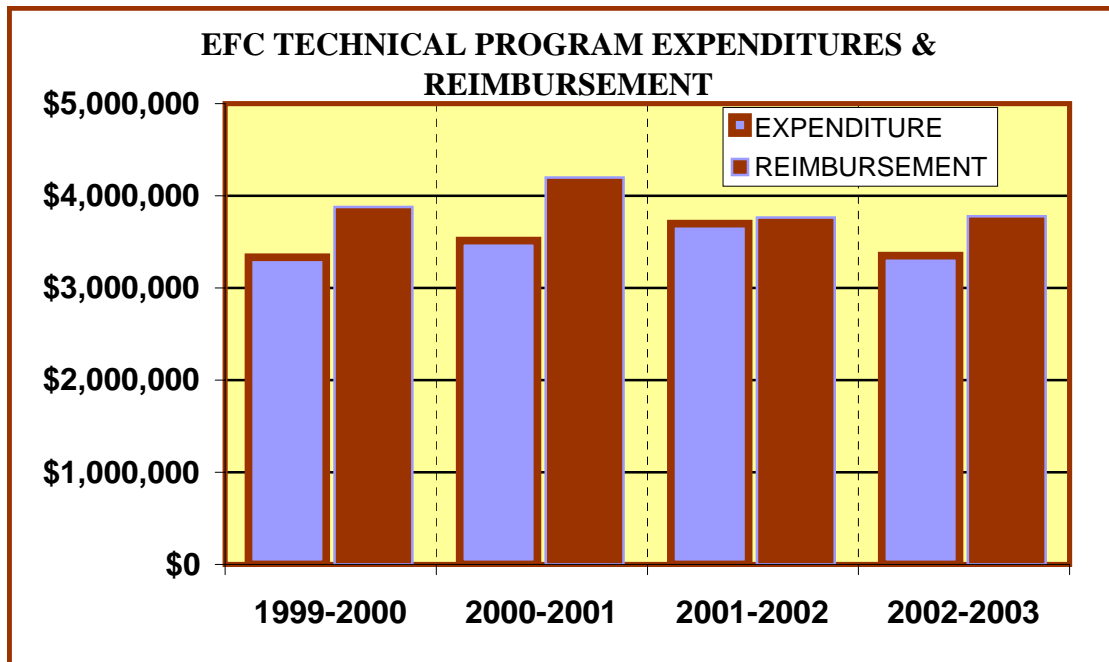
SUCCESS INDICATORS

Completion Rate Over %75			Percent of A, B, & C Grades More than 50%			TECH SCORE OUT OF POSSIBLE 12 POINT SCORE	
In	YES/NO	Score	In	YES/NO	Score	#	%
2002-2003	YES	3	2002-2003	YES	3	12	100%
PLACEMENT Over %75			Technical Program Awards 15 Or More Over 3 Years				
In	YES/NO	Score	In	YES/NO	Score		
2000-2001	YES	3	2002-2003	YES	3		

**EASTFIELD COLLEGE
ACADEMIC YEAR 2002 - 2003**

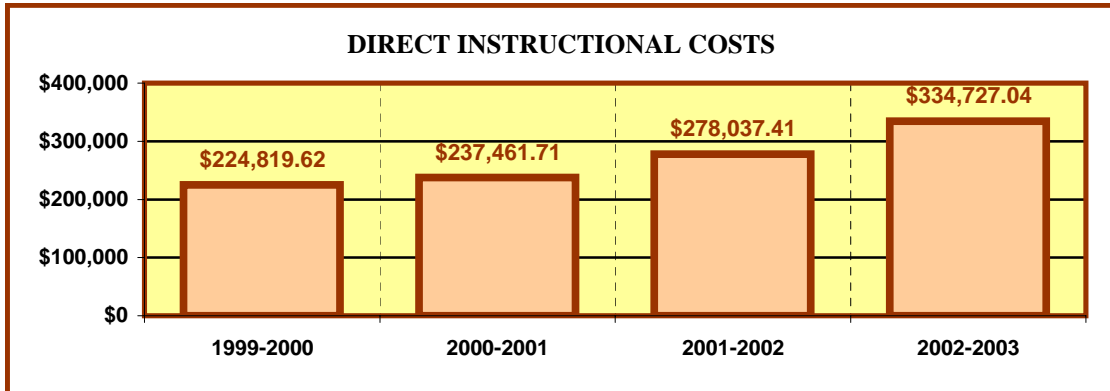


CHILD DEVELOPMENT (CDEC/TECA)				
	1999-2000	2000-2001	2001-2002	2002-2003
EXPENDITURES	\$ 278,249.29	\$ 320,286.32	\$ 366,661.03	\$ 418,338.32
REIMBURSEMENT	\$ 412,417.28	\$ 384,061.44	\$ 359,417.60	\$ 503,982.08

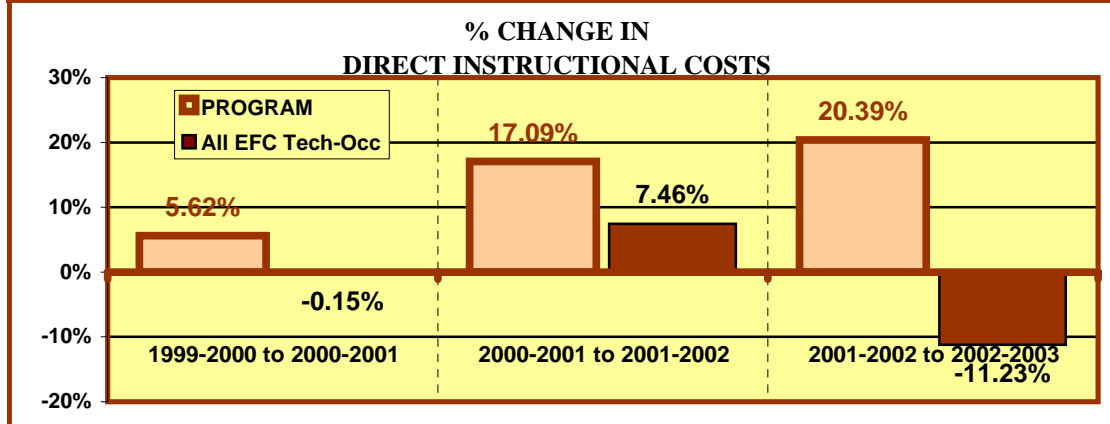


All EFC Tech-Occ				
	1999-2000	2000-2001	2001-2002	2002-2003
EXPENDITURES	\$ 3,332,156.16	\$ 3,512,521.98	\$ 3,698,810.13	\$ 3,351,908.70
REIMBURSEMENT	\$ 3,879,822.76	\$ 4,199,497.60	\$ 3,762,235.68	\$ 3,778,124.48

**EASTFIELD COLLEGE
ACADEMIC YEAR 2002 - 2003**



	DIRECT INSTRUCTIONAL COSTS			
	1999-2000	2000-2001	2001-2002	2002-2003
Program	\$ 224,819.62	\$ 237,461.71	\$ 278,037.41	\$ 334,727.04
All EFC Tech-Occ	\$ 2,603,429.71	\$ 2,599,648.71	\$ 2,793,602.31	\$ 2,479,846.05



	% CHANGE IN DIRECT INSTRUCT. COSTS		
	1999-2000 to 2000-2001	2000-2001 to 2001-2002	2001-2002 to 2002-2003
PROGRAM	5.62%	17.09%	20.39%
All EFC Tech-Occ	-0.15%	7.46%	-11.23%

FINANCIAL INDICATORS

FALL, 2002 PROGRAM/DISCIPLINE (CostCenter) Reimbursement to Cost Center Expenses is positive in					
2002-2003		BOTH 2002-2003 & 2001-2002		3 OF LAST 4 YEARS	
YES/NO	Score	YES/NO	Score	YES/NO	Score
YES	3	YES	3	YES	3
DIRECT INSTRUCTIONAL COSTS DECREASED BETWEEN:					
2001-2002 & 2002-2003		1999-2000 & 2002-2003		BOTH 01-02 & 02-03 AND 00-01 & 01-02	
YES/NO	Score	YES/NO	Score	YES/NO	Score
NO	0	NO	0	NO	0
INSTRUCTIONAL COSTS DECREASED MORE THAN EFC TECH 01-02 TO 02-03			SCORE OF A POSSIBLE 21 POINT TOTAL		
YES/NO	Score	SCORE		%	
NO	0	9		42.9%	
OVERALL REVIEW TOTAL OF POSSIBLE 93 POINTS					
			SCORE	%	
			81	87.1%	