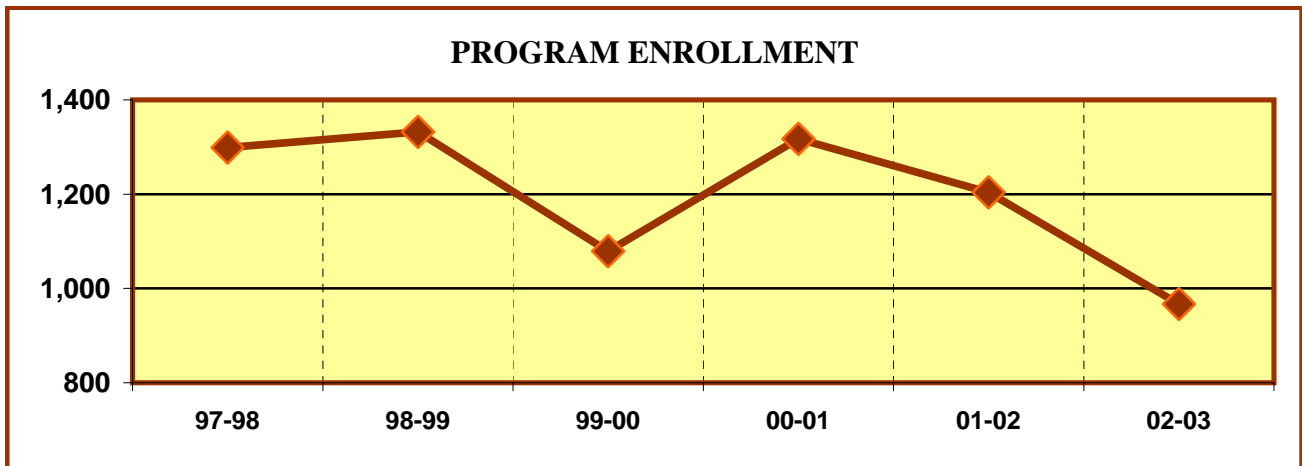
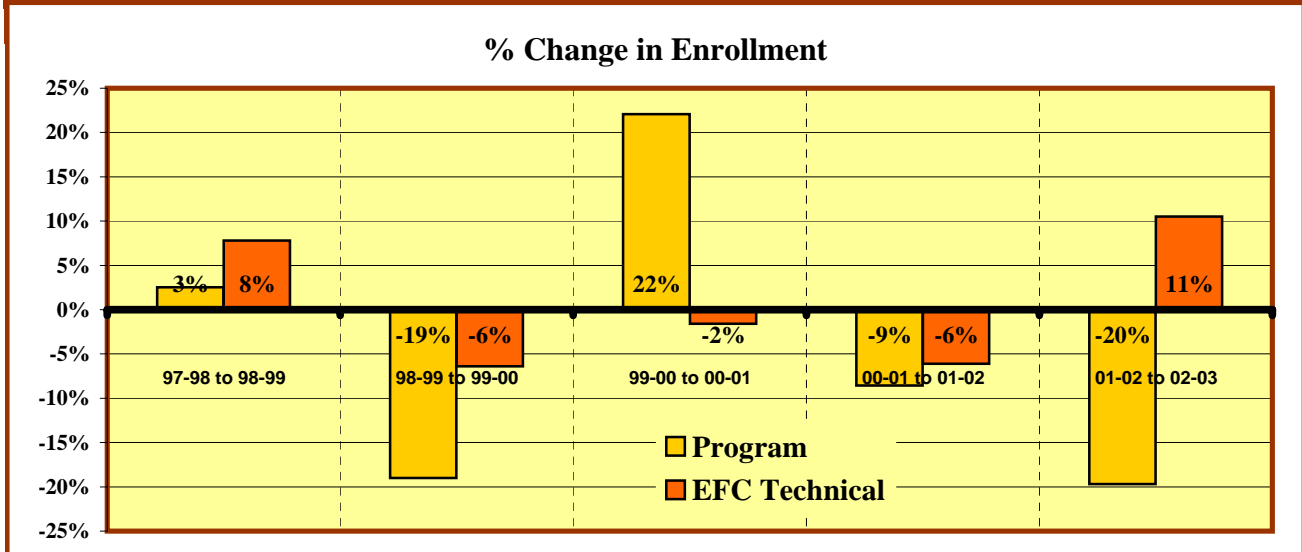


EASTFIELD COLLEGE
PROGRAM/DISCIPLINE REVIEW DATA SHEET
TECHNICAL PROGRAM LEVEL - ACADEMIC YEAR 2002 - 2003

TELECOMMUNICATION/ELECTRONICS (CETT,CPMT,ECT,LOTT,TECM)



	Enrollments					
	97-98	98-99	99-00	00-01	01-02	02-03
Program	1,299	1,332	1,079	1,317	1,204	967
All Tech-Occ Programs	11,345	12,228	11,442	11,255	10,571	11,678



	% Change				
	97-98 to 98-99	98-99 to 99-00	99-00 to 00-01	00-01 to 01-02	01-02 to 02-03
Program	2.5%	-19.0%	22.1%	-8.6%	-19.7%
All Tech-Occ Programs	7.8%	-6.4%	-1.6%	-6.1%	10.5%

ENROLLMENT INDICATORS

	% Change Comparisons			Program Decreases?			Down more than all Tech-Oc?		
	5 year	3 year	1 year	In	YES/NO	Score	For	YES/NO	Score
Program	-5.1%	-3.5%	-19.7%	5 of 5 yrs	NO	5	5 yr avg.	YES	0
All Tech-OC	0.6%	0.7%	10.5%	4 of 5 yrs	NO	5	3 yr avg.	YES	1
				Last 3 of 5 yrs	NO	5	1 yr avg.	YES	3
*OR UP LESS THAN							OF POSSIBLE 30 POINT TOTAL		
							19	63.3%	

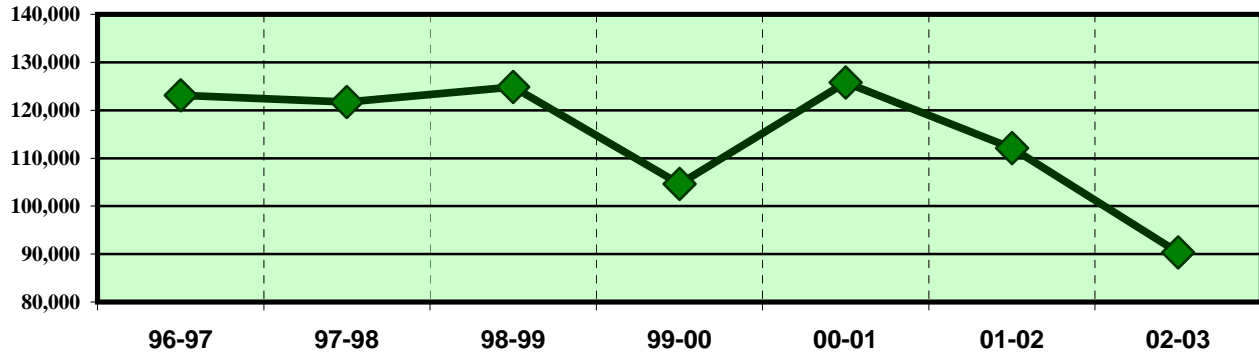
EASTFIELD COLLEGE

PROGRAM/DISCIPLINE REVIEW TECHNICAL PROGRAM LEVEL

ACADEMIC YEAR 2002 - 2003

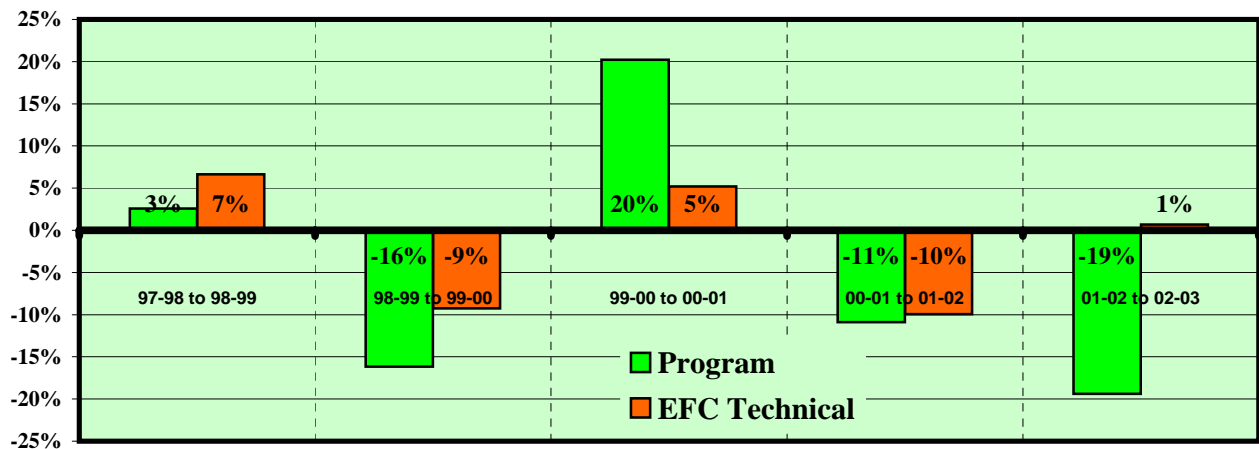
TELECOMMUNICATION/ELECTRONICS (CETT,CPMT,EECT,LOTT,TECM)

CONTACT HOURS



	CONTACT HOURS						
	96-97	97-98	98-99	99-00	00-01	01-02	02-03
Program	123,104	121,696	124,832	104,640	125,792	112,080	90,352
All Tech-Occ Programs	991,664	980,976	1,046,208	949,316	998,828	899,536	905,696

% Change in Contact Hours



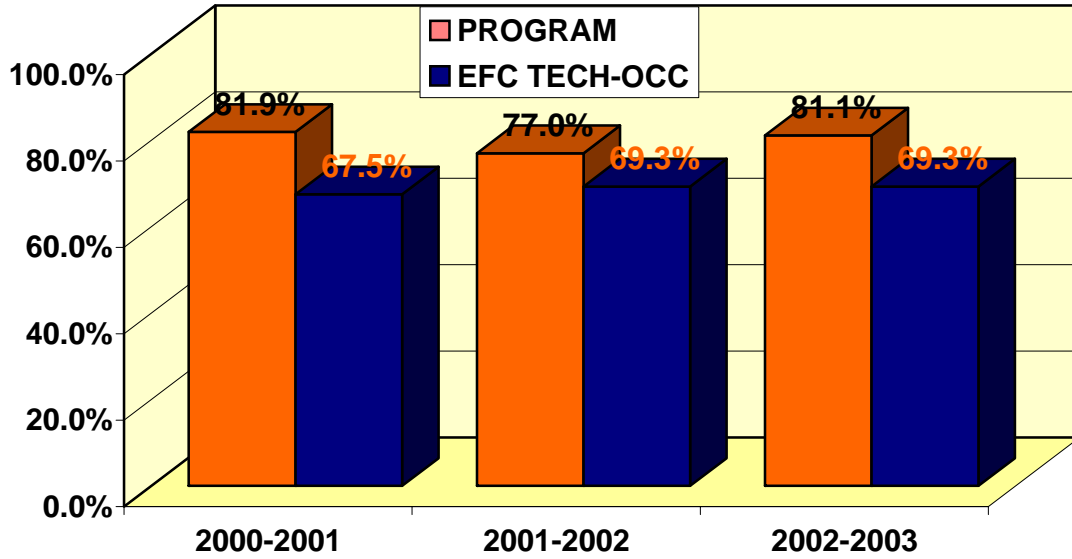
	% Change					
	96-97 to 97-98	97-98 to 98-99	98-99 to 99-00	99-00 to 00-01	00-01 to 01-02	01-02 to 02-03
Program	-1.1%	2.6%	-16.2%	20.2%	-10.9%	-19.4%
All Tech-Occ Programs	-1.1%	6.6%	-9.3%	5.2%	-9.9%	0.7%

CONTACT HOUR INDICATORS

	% Change Comparisons			Program Decreases?			Down more than Tech-Occ?			
	5 year	3 year	1 year	In	YES/NO	Score	For	YES/NO	Score	
Program	-5.3%	-4.4%	-19.4%	5 of 5 yrs	NO	5	5 yr avg.	YES	0	
All Tech-OC	-1.7%	-1.5%	0.7%	4 of 5 yrs	NO	5	3 yr avg.	YES	1	
				Last 3 of 5 yrs	NO	5	1 yr avg.	YES	3	
*OR UP LESS THAN							OF POSSIBLE 30 POINT TOTAL		19	63.3%

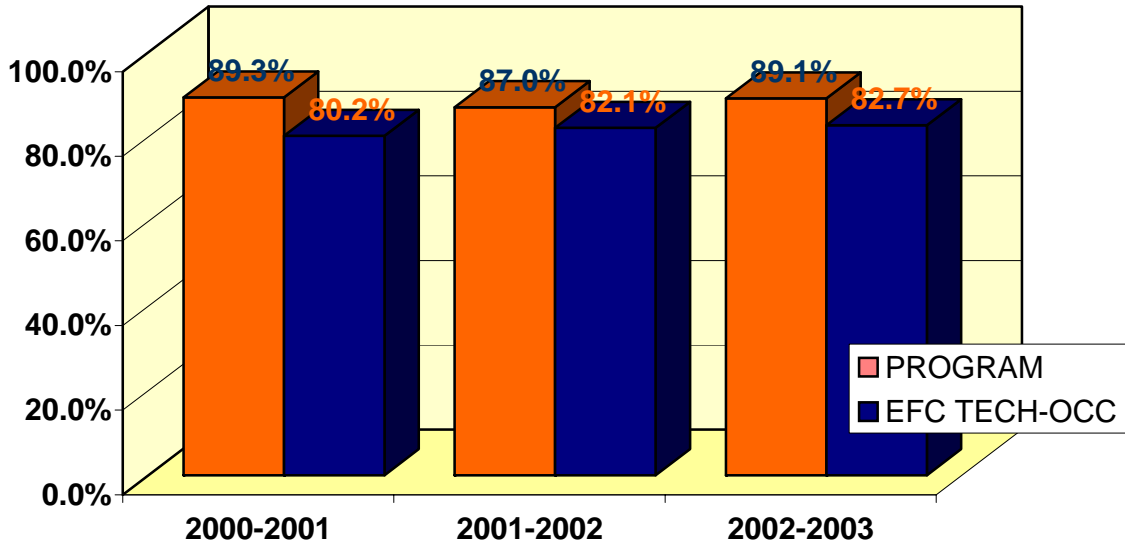
CLASSROOM SUCCESS

TELECOMMUNICATION/ELECTRONICS (CETT,CPMT,EECT,LOTT,TECM)



% OF STUDENTS RECEIVING A, B OR C IN PROGRAM COURSES

	2000-2001	2001-2002	2002-2003
PROGRAM	81.9%	77.0%	81.1%
EFC-TECH	67.5%	69.3%	69.3%

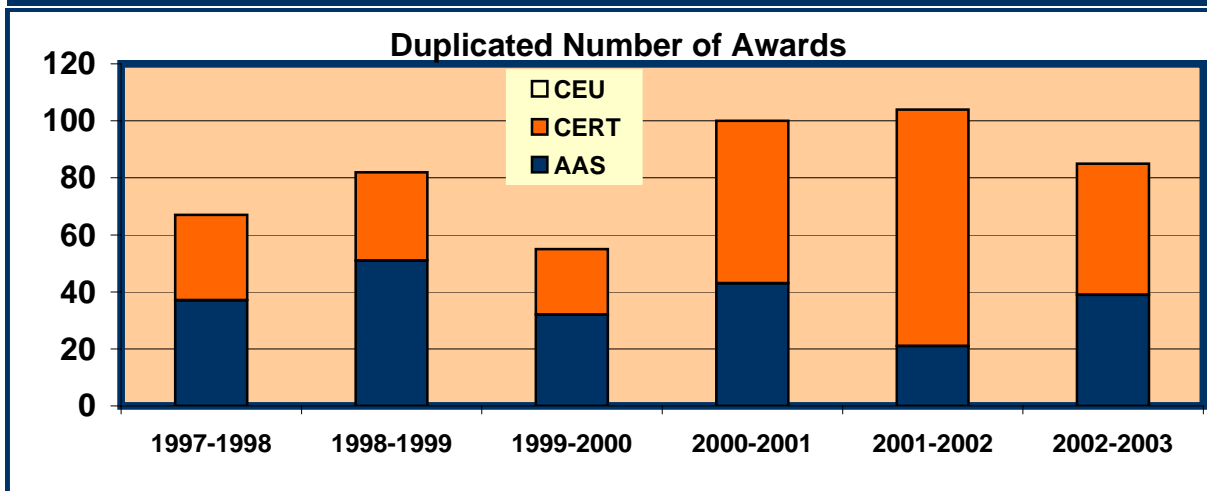


% COURSE COMPLETION FOR PROGRAM

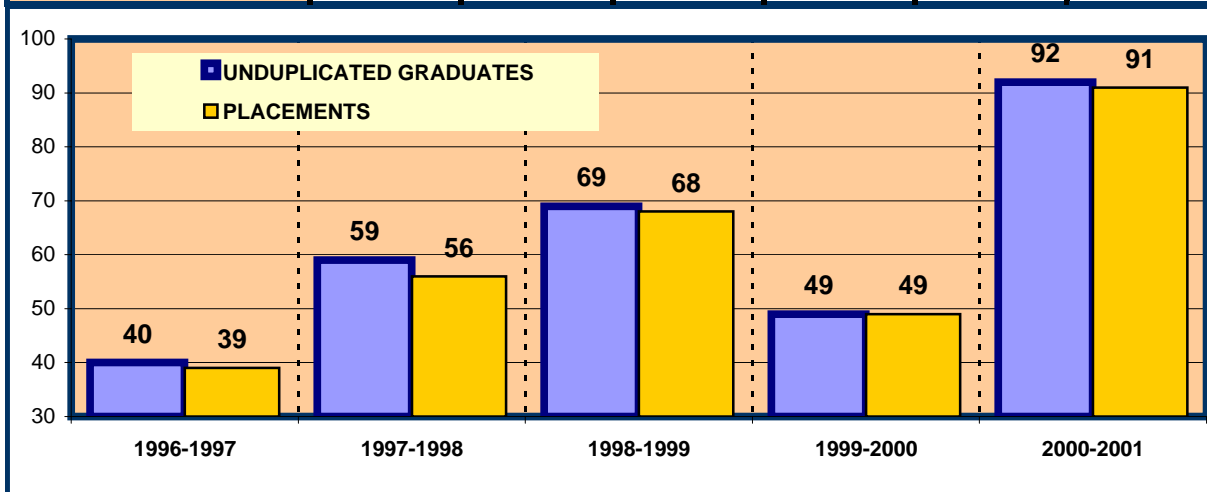
	2000-2001	2001-2002	2002-2003
PROGRAM	89.3%	87.0%	89.1%
EFC-TECH	80.2%	82.1%	82.7%

STUDENT OUTCOMES SUCCESS

TELECOMMUNICATION/ELECTRONICS (CETT,CPMT,EECT,LOTT,TECM)



	1997-1998	1998-1999	1999-2000	2000-2001	2001-2002	2002-2003
AAS	37	51	32	43	21	39
CERT	30	31	23	57	83	46
CEU	0	0	0	0	0	0
PROGRAM TOTAL	67	82	55	100	104	85

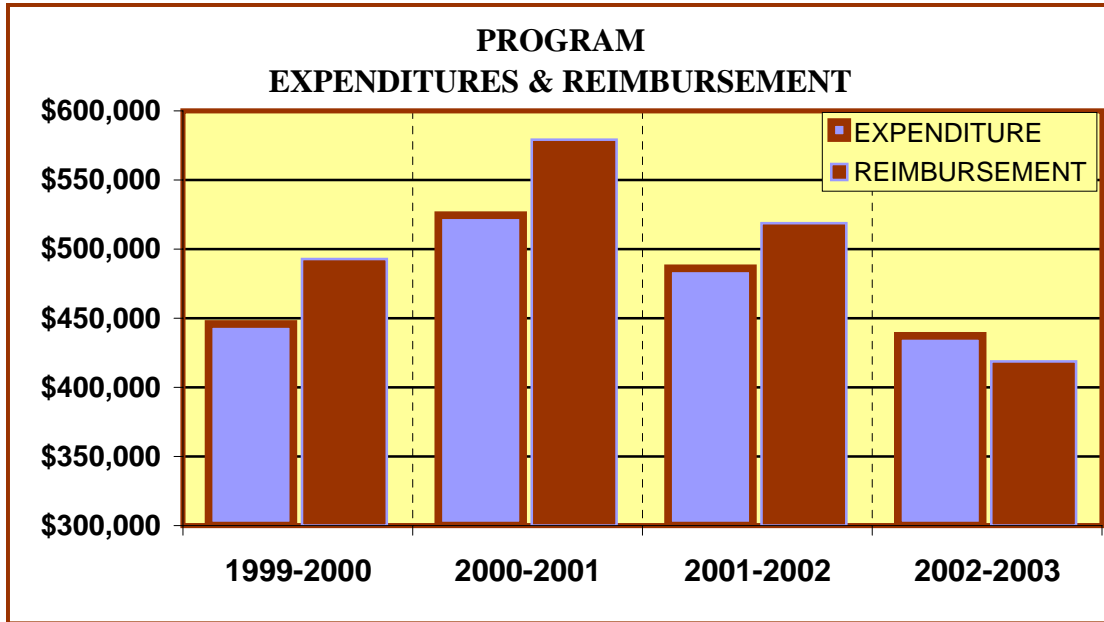


	1996-1997	1997-1998	1998-1999	1999-2000	2000-2001	2001-2002
Unduplicated Grads	40	59	69	49	92	
Placements	39	56	68	49	91	
Program Percentage	97.5%	94.9%	98.6%	100.0%	98.9%	

SUCCESS INDICATORS

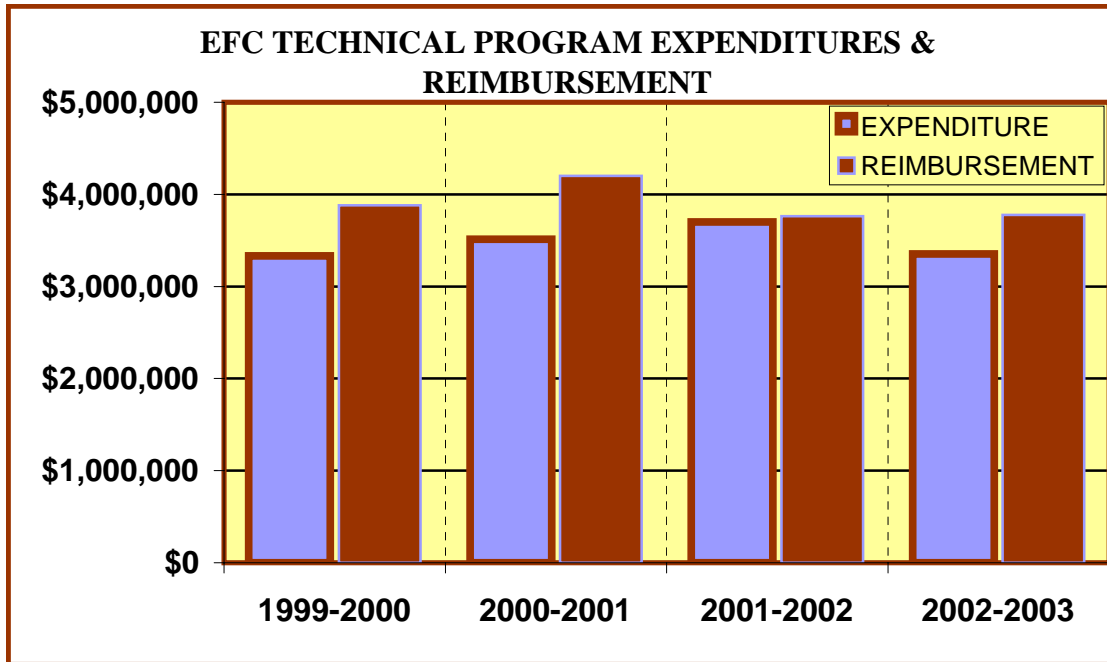
Completion Rate Over %75			Percent of A, B, & C Grades More than 50%			TECH SCORE OUT OF POSSIBLE 12 POINT SCORE	
In	YES/NO	Score	In	YES/NO	Score		
2002-2003	YES	3	2002-2003	YES	3	#	%
PLACEMENT Over %75			Technical Program Awards 15 Or More Over 3 Years			12	100%
In	YES/NO	Score	In	YES/NO	Score		
2000-2001	YES	3	2002-2003	YES	3		

**EASTFIELD COLLEGE
TECHNICAL PROGRAM REVIEW
ACADEMIC YEAR 2002 - 2003**



TELECOMMUNICATION/ELECTRONICS (CETT, CPMT, EECT, LOTT, TECM)

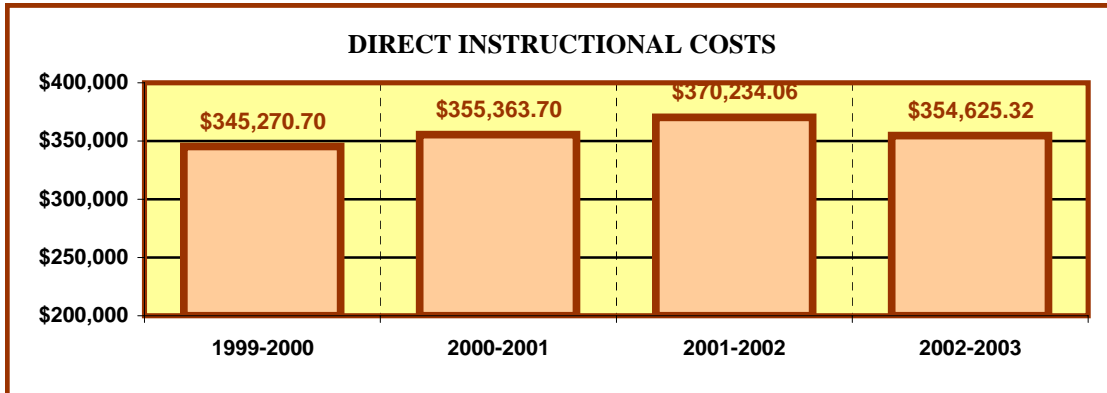
	1999-2000	2000-2001	2001-2002	2002-2003
EXPENDITURES	\$ 445,933.40	\$ 524,631.23	\$ 486,009.23	\$ 437,246.58
REIMBURSEMENT	\$ 492,752.48	\$ 579,276.16	\$ 518,760.00	\$ 418,820.16



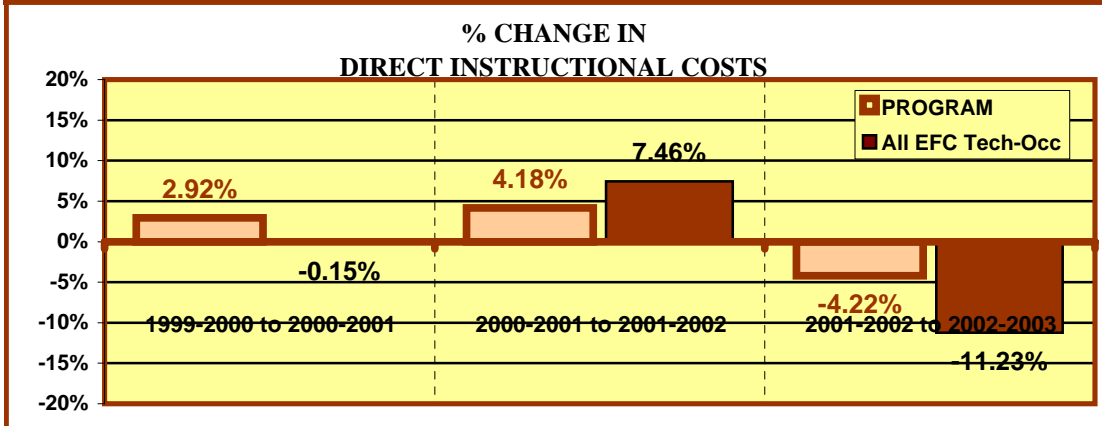
All EFC Tech-Occ

	1999-2000	2000-2001	2001-2002	2002-2003
EXPENDITURES	\$ 3,332,156.16	\$ 3,512,521.98	\$ 3,698,810.13	\$ 3,351,908.70
REIMBURSEMENT	\$ 3,879,822.76	\$ 4,199,497.60	\$ 3,762,235.68	\$ 3,778,124.48

**EASTFIELD COLLEGE
TECHNICAL PROGRAM REVIEW
ACADEMIC YEAR 2002 - 2003**



	DIRECT INSTRUCTIONAL COSTS			
	1999-2000	2000-2001	2001-2002	2002-2003
Program	\$ 345,270.70	\$ 355,363.70	\$ 370,234.06	\$ 354,625.32
All EFC Tech-Occ	\$ 2,603,429.71	\$ 2,599,648.71	\$ 2,793,602.31	\$ 2,479,846.05



	% CHANGE IN DIRECT INSTRUCT. COSTS		
	1999-2000 to 2000-2001	2000-2001 to 2001-2002	2001-2002 to 2002-2003
PROGRAM	2.92%	4.18%	-4.22%
All EFC Tech-Occ	-0.15%	7.46%	-11.23%

FINANCIAL INDICATORS

FALL, 2002 PROGRAM/DISCIPLINE (CostCenter) Reimbursement to Cost Center Expenses is positive in					
2002-2003		BOTH 2002-2003 & 2001-2002		3 OF LAST 4 YEARS	
YES/NO	Score	YES/NO	Score	YES/NO	Score
NO	0	NO	0	YES	3
DIRECT INSTRUCTIONAL COSTS DECREASED BETWEEN:					
2001-2002 & 2002-2003		1999-2000 & 2002-2003		BOTH 01-02 & 02-03 AND 00-01 & 01-02	
YES/NO	Score	YES/NO	Score	YES/NO	Score
YES	3	NO	0	NO	0
INSTRUCTIONAL COSTS DECREASED MORE THAN EFC TECH 01-02 TO 02-03			SCORE OF A POSSIBLE 21 POINT TOTAL		
YES/NO	Score	SCORE		%	
NO	0	6		28.6%	
OVERALL REVIEW TOTAL OF POSSIBLE 93 POINTS					
			SCORE	%	
			56	60.2%	