



# The Library Page

August 2009

The mission of the Eastfield College Library is to create a personalized learning experience in a diverse and welcoming environment.

## Pleasant Grove



The new Pleasant Grove campus Library / Assessment Center opens in the Fall 2009. A well appointed combined Library and Assessment Center is sharing space but offering completely diverse services. The library features a small but effective Reference collection, ample study areas, and a number of computers for online research. Books may be requested from the home library at Eastfield or any DCCCD campus library through Intercampus Loan.

Though sharing space with the library, the Assessment Center is separate and set up with the strictest guidelines for testing centers. All placement testing for new students to the District will be the primary function but other testing is available such as the Compass ESOL for credit English as a Second Language students, the ACCUPLACER for credit students, and the LINDHOLM ESOL for Continuing Education English as a Second Language students.

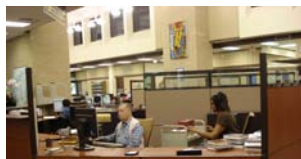
Two Circulation and Testing Center Representatives are available to assist with all services. Both Hollander Thompson and Scott Robinson are included in the article, "Welcome New Staff" on page 4.

Hours for the Pleasant Grove Library/Assessment Center are 10:00 a.m. – 8:00 p.m. Monday – Friday. The telephone number is 972-860-5341. We cordially invite you to visit the Pleasant Grove campus Library/Assessment Center.

### INSIDE THIS ISSUE

- 2 Ready for Fall
- 3 Which Database Should You Use?  
NoodleBib
- 3 Anime and Manga : The Exciting  
Art of Japanese Animation and  
Comics
- 4 Welcome New Staff

# Ready for Fall



Statistics are great indications of how well library services are being received. Maymester and both Summer Semesters have shown an increase in the number of patrons using the library and the number of patrons assisted at the Service desks. We hope that Fall 2009 will show larger numbers as seems to be indicated by renewed growth experienced in Maymester and Summer semesters. Summer II statistics were not completed at this writing.

May 2008	3354 total patrons		May 2009	3821 patrons
May 2008	635 patrons assisted at Service Desks		May 2009	986 patrons assisted at Service Desks
Summer I 2008	13,126 total patrons		Summer I 2009	14,120 total patrons
Summer I 2008	2958 patrons assisted at Service Desks		Summer I 2009	3660 patrons assisted at Service Desks

Coming soon the library will offer a Faculty work area. We are hoping to utilize the vacated area where the Reference desks were originally located to create a new semi-private area for Instructors to conduct research, grade papers, and use the computers.

The library staff is ready to assist students, staff, faculty, and members of the community in conducting research, locating books, CDs, DVDs, and videos, using the online catalog and databases, and Instructor's Reserves. The library has Group Study Rooms for students, individual study carrels, small rectangular tables, round tables, and leisure seating available. Forty computers are in constant use. THEA modules, Biology models, Geology rocks and minerals may be accessed at the Media/Reserves department.

The library is available to all, but only currently enrolled students, staff, faculty, and TexShare patrons may checkout materials. Minors must be accompanied by a parent or legal guardian and may not use the computers except for research. A DCCCD ID card, Driver's License, or State ID must be presented to borrow materials.

Most items are checked out for a three-week period including books, CDs, and CD-ROMs. Videos and DVDs are checked out for 3 days with one renewal allowed. Telecourse videos and DVDs are checked out for 2 days with no renewals allowed.

The library is an inviting and welcoming environment conducive to study and research. We hope you join us this Fall in utilizing the Eastfield College Library. The library staff is ready to assist you.

## Which Database Should You Use? NoodleBib

[NoodleBib](#) is a remarkable MLA works-cited page or APA reference page for research papers available through the [DCCCD library web site](#) or [Eastfield College Library web site](#). Based on the most current edition of the *MLA Handbook for Writers of Research Papers* and the *Publication Manual of the American Psychological Association*, NoodleBib has preset formatting which only requires the user to type in the bibliographic information of the book, magazine, journal, or database. MLA is most often used with English and Humanities courses while the APA is used most often with Science, Psychology, and Sociology courses. Users must create a NoodleBib account with a Personal ID which serves as a password. **Create a New List** is required for each assignment. Be careful to choose the appropriate format before starting **Create a New List** as changes from MLA to APA or visa versa are not allowed. Always check with the Instructor before using either MLA or APA formats.

The first information is a description of the List which should contain your name. Next, choose the citation type such as book, journal, newspaper, etc. Fill in the blanks using the information available. Always remember to **Check for Errors**. When the errors have been checked, click on **Generate Citation**. Using the pull down menu, another citation may be started. Editing is allowed using the Edit, Copy, or Delete buttons. Help is always available and NoodleBib offers questions to verify type of formatting as information is added. NoodleBib alphabetizes the entries and will add correct punctuation and formatting and highlight errors. Users must provide correct capitalization and proofread carefully for typos. NoodleBib is very popular with students.

### Anime and Manga: The Exciting Art of Japanese Animation and Comics

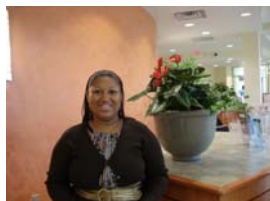
A very unusual exhibit was on display June – July 2009. Thanks to the innovative idea of Amanda Thompson, one of our new part-time employees, the exhibit focused on the Anime and Manga art of Japanese animation and comics. Anime originated in Japan about 1917 with distinctive characters and backgrounds usually hand-drawn and later computer generated. The type of artistry is very different from other types of animation. A wide variety of plots along with both fictional and historical characters, events, and settings create a format aimed at a broad range of audiences. Anime was heavily influenced by Disney animation in the United States during the 1930s.



Manga is the Japanese word for “comics” or “cartoons”. Due to the profound contributions of artist Osamu Tezuka, Manga began as a cost cutting enterprise and became a popular artistic form on its own. Usually published in black and white with chapter covers printed in color, Manga comics are read from right to left. The art of Japanese comics has reached 24 billion dollars in Japan and over 180 million dollars in the United States and is one of the fastest growing markets in America.

Many Anime and Manga fan clubs exist at present, and more are being formed daily. Web sites abound with information about this type of art. Everything from encyclopedic information about the animation and comic world, learning to distinguish characters in the series, learning to draw anime and manga, to watching anime animation and accessing a list of the fanclub members, the web sites offer a tremendous variety of instruction on both types of art.

## Welcome New Staff



**Hollander Thompson**



**Candace Cathey**



**Scott Robinson**

Three new staff members are making their appearance for the August newsletter. Candace Cathey is the new Librarian I during the evenings and on Saturday. Hollander Thompson and Scott Robinson are both Pleasant Grove campus Circulation and Testing Center Representatives.

Candace is a part-time Graduate student at UNT pursuing a Master's degree in Library and Information Science. Due to her previous occupation as a Library Specialist for an International Law Firm in Dallas, Candace is especially knowledgeable in legal issues. Candace works at the Informational Services Desk during the afternoon and evening hours. As Librarian I she assists with research, instructing students using the library catalog and databases, and conducts information classes. We are very pleased to have her on board.

Hollander Thompson will complete her Associate of Arts degree from the DCCCD during the 2009 – 2010 academic year. She is planning to transfer to a four-year university to complete a Bachelor of Science degree in Interdisciplinary Studies with Teacher Certification in Special Education. She has enjoyed her experience with the DCCCD so much that she decided to join the Eastfield College Pleasant Grove campus in the Library/Assessment Center. Prior to joining Eastfield, Hollander was an Administrative Assistant for Houghton Mifflin Harcourt Publishing company and IBM. Hollander wants you to know, "I am looking forward to a great academic year and to helping students at the Pleasant Grove campus be successful in meeting their goals with the same spirit of excellence I have received as a student in the DCCCD. If you are in the area, please stop by and say 'hello'".

Scott Robinson graduated in 2004 with a BA in Anthropology from University of Oklahoma. Before coming to the DCCCD, he worked for Princeton Review providing graduate and professional school test preparation for North Texas and Oklahoma universities. He has also taught classes for SAT preparation. Scott enjoys sports and video games and at present his passion is college football. He states "I am excited to be a part of the Pleasant Grove campus and am looking forward to the start of classes August 24<sup>th</sup>."

**L Building**  
**L200**  
**3737 Motley Dr.**  
**Mesquite, TX 75150**

[eastfieldlibrary@dccd.edu](mailto:eastfieldlibrary@dccd.edu)

### WE'RE ON THE WEB

[www.eastfieldcollege.edu/er/Library/INDEX.asp](http://www.eastfieldcollege.edu/er/Library/INDEX.asp)

Eastfield College Library began in 1970 upon the founding of the campus. The Library has grown since those early days to incorporate more than 50,000 books and serve thousands of students each semester. We pride ourselves in offering professional assistance with caring and understanding. Our goal is to offer the best and most rewarding experience for the patron.

The Library is open to all - students and staff, Instructors, and members of the community. We extend a heartfelt welcome and hope you enjoy your time with us.

Circulation Desk	972-860-7168
Reference Desk	972-860-7174
Media/Reserves	972-860-7178
Pleasant Grove	972-860-5341